

**ThermaRoll**  
Roller Garage Door

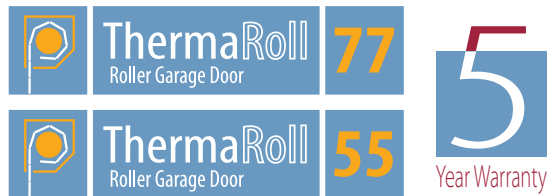


Great to come home to!

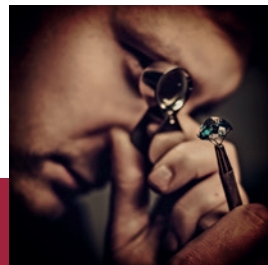




Intelligent design, dependable quality... every time



# No compromise on Quality



We all associate quality with craftsmanship and there are three things behind great work; the finest materials, the right tools and time-served skills.

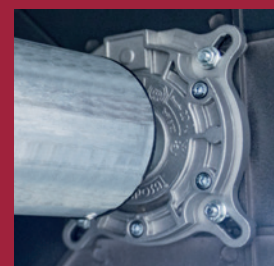
We see craftsmanship in fine furniture, jewellery, architecture and leather work. What about garage doors? Perhaps not first on the list, but at Garage Door Systems we share the same principles in our approach.

To us, every detail matters and ThermaRoll takes the insulated roller garage door into a new era of performance and reliability.

What about an example?

Our TÜV tested safety brake is a great example. It sits hidden away, quietly protecting the door. It is only needed in the unlikely event of the drive motor shearing, at which point it stops the door from free-falling.

The quality of the brake is only tested in that one moment and our approach means the brake we use is, no compromise, the best.







# From contemporary to traditional...

## Designed for Style

Subtly contoured and curved, the  
slat design is a classic

The door is made from interlocking  
twin walled aluminium slats each with a  
strengthening rigid foam core.



**ThermaRoll 77** Roller Garage Door  
ThermaRoll 77 has a 77mm deep profile and is available in all sizes and finishes to suit single and double openings in a range of 11 finishes. It is Certified to the Secured by Design standard.

**ThermaRoll 55** Roller Garage Door  
ThermaRoll 55 has a 55mm deep profile that is more compact when rolled up and is ideal for garages with limited headroom, requiring just 205mm headroom. It is available to suit single size openings in a range of 6 finishes.

**5**  
Year Warranty

The comparative sizes of  
ThermaRoll 77 slat and  
ThermaRoll 55 slat



The gentle curve of each slat with subtly defined strengthening ribs creates a pleasingly aesthetic look that is equally at home on modern or traditional homes.

The factory coated aluminium is highly resistant to corrosion and has an attractive satin sheen.



...always a stylish and quality finish



ThermaRoll 77 in anthracite grey RAL 7016



# The smallest space requirement of any garage door

## The best use of Space Weather

There is no better garage door for making the maximum use of your garage space and keeping out the weather

ThermaRoll makes such a difference:



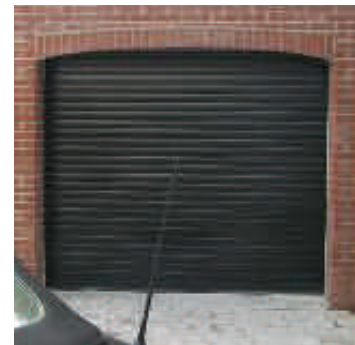
### No lost storage space

The door rolls neatly up above the garage opening so you don't lose any storage space unlike other types of garage door with their tracks or in-swing opening action.



### Park as close as you like

A huge advantage ThermaRoll has over traditional garage doors is vertical opening and closing. No bumped shins when you open ThermaRoll and you can park your car right up to the door both inside and outside your garage.



Vertical opening also means fitting ThermaRoll to an arched garage makes a very neat job and preserves the arched feature.

### More room to drive through

ThermaRoll is typically fitted behind the garage opening, allowing the removal of the frame required for traditional garage doors. No frame means up to 150mm (6") extra of wing mirror space and up to 75mm (3") extra headroom, essential for 4x4 owners!



### Enhanced weather protection

Traditional garage doors have gaps at the sides and often allow leaves to blow under the door. ThermaRoll has interlocking foam insulation filled slats and travels in lined guides that help block cold draughts.

The shaped rubber seal on the bottom slat greatly reduces the likelihood of dust and debris blowing into your garage when it closes against a level floor. ThermaRoll's combination of weather-beating features helps create a much more pleasant and usable garage space.



Complete convenience and ease of use

Makes your garage a more pleasant space to use



Vertical travel makes the best use of space...  
...park as close as you like!



ThermaRoll 77 in burgundy



# No compromise on security

Police Certified

# Security

Secured by Design



Official Police Security Initiative



ThermaRoll 77 in racing green

## Secured by Design

The ThermaRoll 77 door is independently tested to the Police preferred Specification Secured by Design standard.

## Direct connect locking

Keeping the door securely closed are a minimum of three locking straps that incorporate heavy duty direct connect linkages for maximum resistance to forced opening.



# ThermaRoll 77 - Police Preferred Specification



“Research has demonstrated dramatic crime reduction benefits of up to 70% with Secured by Design products”

## “Designing out crime” with physical security products - SECURED BY DESIGN

At Garage Door Systems we take security seriously, and have always designed our products to be inherently secure. Secured by Design approval, which is the official Police Security Initiative, means that ThermaRoll 77 is built to the Police Preferred Specification and you can have confidence that a Garage Door Systems' insulated roller door is an independently tested and certified security product.

ThermaRoll 77 has a strengthened design, 89mm diameter barrel and 95mm guides that achieve the Secured by Design standard.

## 105dB Alarm as standard

Working with the physical security of the locking and strength of the door is Somfy's electronic security. The control unit senses any attempt to force the door open by levering the bottom of the door upwards. A 105dB alarm sounds to provide an alert and deter further attempts at entry.



# ThermaRoll 55 - superior strength and locking



ThermaRoll 55 Autolock

\*Not available as Secured by Design

## 65mm barrel and autolocks

The ThermaRoll 55 is the strongest compact door on the market, with superior strength & locking.

The 65mm diameter barrel and autolocks create a robust combination that is both reliable and secure.



Only 205mm  
headroom  
required



50+ years of service and over 110 million motors!



Total Total

# Control & Power

**somfy**® Building happiness



The Somfy Rollixo RTS control panel



The neat Keygo keyfob transmitter



The concealed tubular motor drive

## 110 million motors and counting

At the heart of ThermaRoll is a motor and control solution from Somfy. Garage Door Systems selected Somfy for its 50+ years of unbroken service and proven reliability with over 110 million motors manufactured!

Somfy's credentials are second to none. Sustainable and environmentally responsible manufacturing is behind the most respected 5 year warranty in the industry.

Somfy motors provide power to spare and the Rollixo control unit uses cutting edge technology to control the door safely with an extremely reliable, permanent power, wired safety system that won't let you down.

The most respected 5 year warranty in the industry



# Somfy Rollixo RTS control, state-of-the-art control



## Sophisticated yet so simple to use!

The Somfy Rollixo RTS control unit provides a convenient control point for your door. From it you can:

- Open and close your door
- Programme in new transmitters
- Activate the "Holiday mode" to lock out the control panel when you're away

It also houses the LED courtesy light and the alarm siren. It is the systems' 'brain'!

Somfy Rollixo RTS monitors for open and close command signals from the remote controls and other programmed control devices such as wall switches and keypads.

Most importantly, Somfy Rollixo RTS constantly monitors the safety systems, watching over the motor and the safety edge to stop and reverse the door a short distance if triggered.

Somfy Rollixo RTS is also standing guard when the door is locked, ready to trigger the 105dB alarm if an attempt is made to force up the bottom slat of the door.

There is also the option to control external lighting.

Safety is at the heart of everything we do!



Permanent Power for complete

# Safety & Reliability

Proven solutions are those that have demonstrated long-term reliability

Keeping you and your family safe is at the heart of everything we do. The safety systems that protect ThermaRoll use a permanent power solution.

Permanent power means no reliance on batteries to keep safety systems working.

The bottom weather seal on the door contains a sensing strip that, if obstructed as the door closes, sends a signal to the control unit to stop and reverse the door a short distance to allow any obstruction to be removed.

The permanent power cable ensures that the safety sensor is always powered and the safety signal is instantly received.

The TÜV tested safety brake prevents the door dropping in the unlikely event of a motor shear.





# Keeping you and your family safe



## CE Marking Why it matters - your safety.

It is against the law to install a power operated garage door in the UK without complying with The Machinery Directive. Why is it against the law? Because all garage doors must be manufactured to comply with European Safety Norms EN 13241-1

As a Door & Hardware Federation (DHF) Member, Garage Door Systems Limited is committed to your safety and all our garage doors and automation carry the CE mark. This shows they have been tested to EN 13241-1 and comply with the directives.

The legislation is in place to ensure the safety of the products and that they meet the expected criteria for performance. If a garage door or automation does not carry the CE mark it does not meet the legislation and should not be purchased.

BE AWARE! The legislation also states that doors that only have photocells installed and no safety edge are not safe or legal.



**Raising Standards  
Safety Assured**

## Don't take a risk

# Colour coordinated in every detail

The choice is yours with

## Complementary finishes

### Matched guides & box

ThermaRoll doors are supplied with a full box as an option. A full box completely conceals the roll. This also allows ThermaRoll 77 and ThermaRoll 55 to be fitted outside the garage.

The box and door guides are colour coordinated as standard to the door curtain for all solid colours.

Wood effect foil doors are supplied with brown (RAL 8019) box and guides as standard, however they can also be coordinated with any of the colours from the standard colour offering.

Golden oak

Rosewood

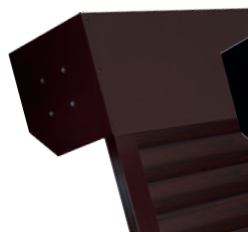
Brown  
(RAL 8019)

ThermaRoll 77 in  
anthracite grey RAL 7016

### Contrasting Guides & Box

Want contrasting colours for your guides and box to match your garage interior? No problem, Garage Door Systems can supply your guides and box to any factory finished colour from our range.

Wood effect doors are also available with contrasting box and guide colours.



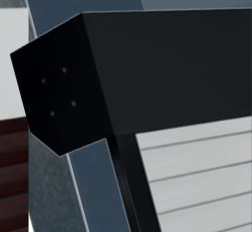
Brown box and guides  
with rosewood door



Black box and guides with  
golden oak door



White box and  
guides with  
rosewood door



Black box and guides  
with white door



## Fully enclosed box option

Fully enclosed

# Safe, neat & tidy



The full box conceals the roll for a super-neat installation and encloses the door mechanism.



The half box option helps prevent debris dropping onto the door roll.



The no roll box configuration.



Colour your world with ThermaRoll 77

# Colours



Factory Finished



White RAL 9016

Black RAL 9005

Cream RAL 9001

Racing Green RAL 6009

Dark Blue RAL 5011

Pale Green RAL 6021

Anthracite RAL 7016

Burgundy Red RAL 3004

Brown RAL 8019

Foil Finish

Golden Oak Wood Effect Foil

Rosewood Wood Effect Foil



ThermaRoll 77 Slat

Colours shown are for guide purposes only and are limited by the printing process.  
Always request to see a finish sample for confirmation of colour.



## Classic colours with ThermaRoll 55



Factory Finished

5  
Year Warranty

Anthracite RAL 7016

Black RAL 9005

White RAL 9016

Brown RAL 8019

Foil Finish

Golden Oak Wood Effect

Rosewood Wood Effect

10  
Year Warranty

ThermaRoll 55 Slat



## Comprehensive warranties

### Peace of mind Warranty

All Garage Door Systems Limited products' are independently tested and certified to comply with the highest safety requirements and performance characteristics of the European Safety Norms EN 13241-1. This is our commitment to providing products that are both safe and durable. The following covers the warranty periods.

Terms and conditions apply - please see your customer care booklet for full details or visit [www.gdsdoors.eu](http://www.gdsdoors.eu)

All warranties apply from the original date of installation.

ThermaRoll Roller Garage Doors

Garage Door Components

Garage Door Wood Effect Foil Colours

Garage Door Factory Finished Colours

5 10  
Year Warranty Year Warranty

5 years

10 years

5 years



### Your Customer Care Booklet

This booklet provides all you need to know about your garage door, from operation, care, servicing and maintenance, through to your warranty.

Register online!  
Register your door on-line to receive automatic service reminders  
Visit [www.gdsdoors.eu/warranty](http://www.gdsdoors.eu/warranty)

# Feature file – Built to last

## Safety sensing

Every door has a permanent power wired safety sensor built into the bottom weatherstrip that stops and reverses the door a short distance on detecting an obstruction.



## Manual override

If power fails a simple hand crank allows the door to be opened by hand.



## Keygo keyfob transmitter

Two Keygo 4 RTS remote controls are supplied with every door. Extra remote controls can be added and are easy to programme.



## Somfy Rollixo RTS XSE technology

The Somfy Rollixo RTS XSE control unit uses cutting edge technology to control the door safely with an extremely reliable, permanent power, wired safety system that won't let you down.



**Safety Brake**  
Selected for performance and durability and no compromise safety. The safety brake engages and stops the door from dropping should the motor fail. TÜV Tested.







Built to Last



### Reliability

A five year warranty covers the motor unit and the door control system - peace of mind as standard!



Year Warranty

Space Saving



### Space saving

The door curtain rolls tightly above the opening without the door or tracks projecting inside your garage leaving more storage space in the garage for you.

Built to Last



### Webbing option

Slats have endlocks as standard, however slats can be fitted with webbing as an option to assist the smooth operation of the curtain and reduce the noise levels during operation.

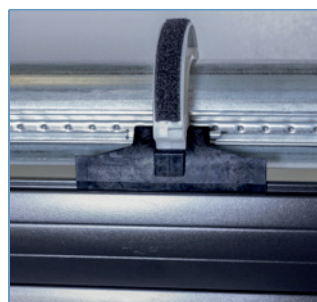
Weather Shield



### Maximum weather protection

ThermaRoll is engineered to help block cold draughts and keep your garage warm and usable with guide rails that are lined and a shaped rubber seal on the bottom slat.

Security Guard



### Direct connect locking

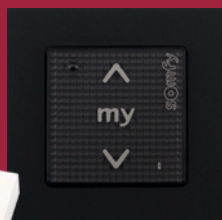
Keeping the door securely closed are a minimum of three locking straps that incorporate heavy duty direct connect linkages for maximum resistance to forced opening.

# Smart Control



## Smoove Wireless Wall Switch

The same size as a light switch these stylish Somfy Smoove wall switches can be fitted in your home to open your garage door by remote control.



## Somfy Remote-controlled electric socket

Turn your lights on or off with the Somfy remote control electric socket. Up to 3000W load.





# Take control of your world

Versatility

# at your fingertips



## Control & motor options

HOME MOTION by  
**somfy**



### Keygo Remote

Two Keygo 4 RTS remote controls are supplied with every door. Extra remote controls can be added and are easy to programme.



### Wired Key Switch

This externally wall mounted key switch allows operation without the use of a hand transmitter.



### Secure Metal Keypad (IP54)

Anti-vandal keypad for secure garage door operation.



### Radio RTS External Wireless Keypad

Key in a code to operate your door.



### Centralis RTS Lighting Receiver

Control internal or external lighting by remote control.



### Standard RTS Receiver

For automating 3<sup>rd</sup> party devices such as gate openers.



### Reflective Photo-eye Kit

Non-contact obstruction detector beam for added safety.

### Lockable Override Cover

A lockable cover to protect the manual override access point on externally fitted doors.



### Manual Exterior Release

For use in emergencies or in the event of power failure. The manual release allows the door to be opened manually from outside the garage.

### Economotor

An alternative to the standard Somfy motor.



# Taking care of your door

## Getting the The best

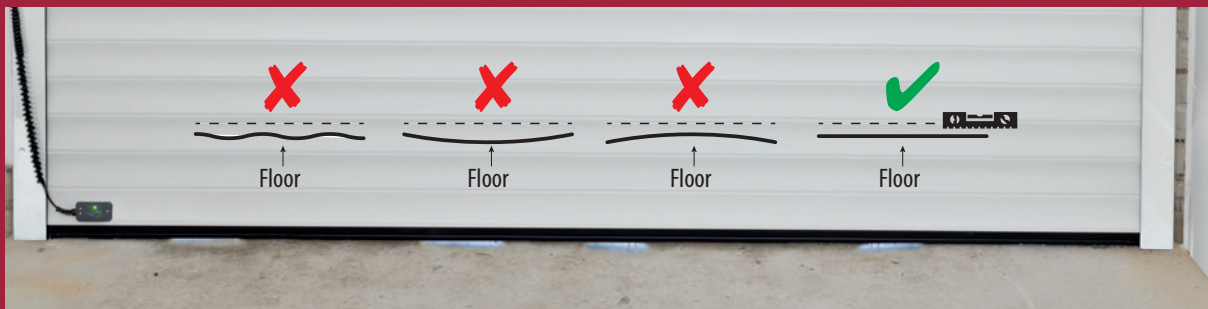
### Care & maintenance

Every Garage Door Systems' garage door is provided with a Customer Care booklet that explains how to operate your door, how to look after the appearance of your door and the maintenance needed to keep your door in good working order and safe to use. The booklet also details your doors' warranty and the terms and conditions that apply for keeping the warranty valid.

Your door should be regularly serviced by a GDS trained garage door specialist. You can register on-line to receive a reminder of when your door is due for a service.

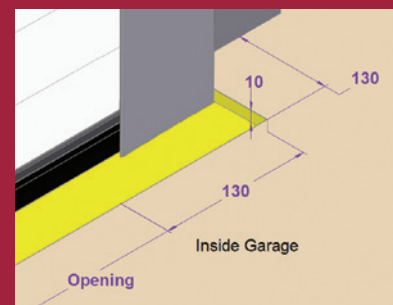


## The best performance for your door



### Floor Level

Should the leading edge of your garage door not meet an even level surface you will experience gaps at points across the span of your garage opening when the door is closed. If you do have undulations in the floor you will be more prone to rain and debris ingress. Your Garage Door Systems professional installer will provide you with solutions to best overcome this.



### Safety edge performance

An uneven floor causes uneven compression of the bottom seal and will compromise the long-term performance of the safety edge and is not covered by warranty

Allow for a floor rebate behind a level floor opening for improved weather protection

### Curtain marking

Over time, the rolling action of the door curtain against the locking rings and straps and dust and debris on the curtain will create marking to the surface of the door on all colours of door. This does not constitute a fault and is a characteristic of all roller doors and does not affect performance and is not considered warranty.





Let us help you to choose the right door



# ThermaRoll Comparison



Key characteristics	Our security door	The low headroom door
<b>Safety</b>		
CE marked	●	●
Construction Products Directive / Machinery Directive compliant	●	●
Permanent power safety edge	●	●
Safety photo cell	○	○
<b>Security</b>		
Secured by Design Accreditation	●	
High security locking system	●	
Holiday security mode	●	●
Alarm 105db	●	●
Webbed curtain	○	○
Endlocked curtain	●	●
<b>Installation</b>		
Headroom required	300mm/360mm	205mm
Max. over guide width	5200mm	2500mm
Max. opening height	3000mm	2150mm
Guide rails	95mm / 70mm*	66mm
Slat height	77mm	55mm
Internal installation	●	●
External installation	○	○
No box	●	
Half box (90° fascia	○	●
Full box (45° fascia)	○	○
<b>Warranty</b>		
5yr warranty door, motor, controls	●	●
10yr warranty wood effect finish	●	●
5yr warranty factory finished colours	●	●
<b>Automation</b>		
Internal manual override	●	●
External manual override	○	○
Remote control keypad	○	○
Key switch operation	○	○
Remote control	●	●
Manual override	●	●

\*Secured by Design only available on ThermaRoll 77 with 95mm guides

KEY: ● Standard ○ Optional

# ThermaRoll technical information



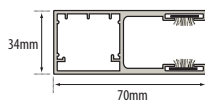
**Ordering Height** = Guide Height  
**Ordering Width** = Over Guide Width  
**Total Height** = Guide Height + Headroom

## Headroom & drive through height

	ThermaRoll 77
	HR = 300mm for guide heights < 2600mm high HR = 360mm for guide heights > 2600mm high Available drive through height = guide height - 77mm
	ThermaRoll 55
	HR = 205mm for all guide heights Available drive through height = guide height - 55mm

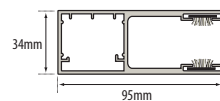
## Guides & drive through width

### 70mm Guides: ThermaRoll 77 up to 3000mm wide x 2700mm high



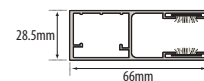
Available drive through width = Over guide width - 140mm

### 95mm Guides: ThermaRoll Doors all widths



Available drive through width = Over guide width - 190mm

### 66mm Guides: ThermaRoll 55 Doors

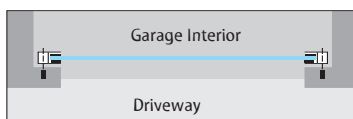


Available drive through width = Over guide width - 132mm

## Installation options

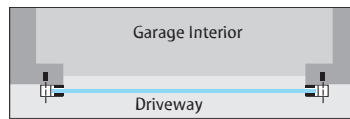
### INTERNAL FACE FIXING

The door is fitted to the back of the opening without the need for a timber frame. This allows for the maximum drive through width and height depending on available headroom.



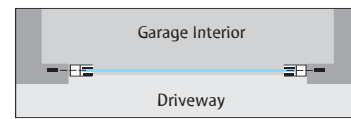
### EXTERIOR FACE FIXING

In some cases it may be necessary to fit the door to the outside of the garage. The ThermaRoll 55 with full box system makes this possible.



### REVEAL FIXING

This option allows the door to be fitted between the reveals maximising available space within the garage or for garages where there is no available side room. If the roll is going to be visible from the outside the 90° back box must be installed.



Garage Door Systems Limited, Wakehurst Ind. Est.,  
Ballymena, BT42 3AZ

NI: Tel: 028 2565 5555

Fax: 028 2564 4030

RoI: Tel: 1850 510 510

Fax: 0044 28 2564 4030

Email: [info@gdsdoors.eu](mailto:info@gdsdoors.eu)

Web: [www.gdsdoors.eu](http://www.gdsdoors.eu)

Garage Door Systems reserves the right to alter specifications to design and manufacture without notification. All specifications are correct at time of publication, errors and omissions may apply. Colours shown are for guide purposes only and are limited by the printing process.